

# Strengthening Children and Families

## Child Welfare Mapping in Massachusetts

Child welfare mapping workshops bring together local stakeholders to collectively:



Create a map of the child welfare landscape



Identify local resources and gaps in services



Determine priorities for change



Develop an action plan



Enhance collaboration among community partners and across systems



Reduce risk of child welfare system involvement for children and families

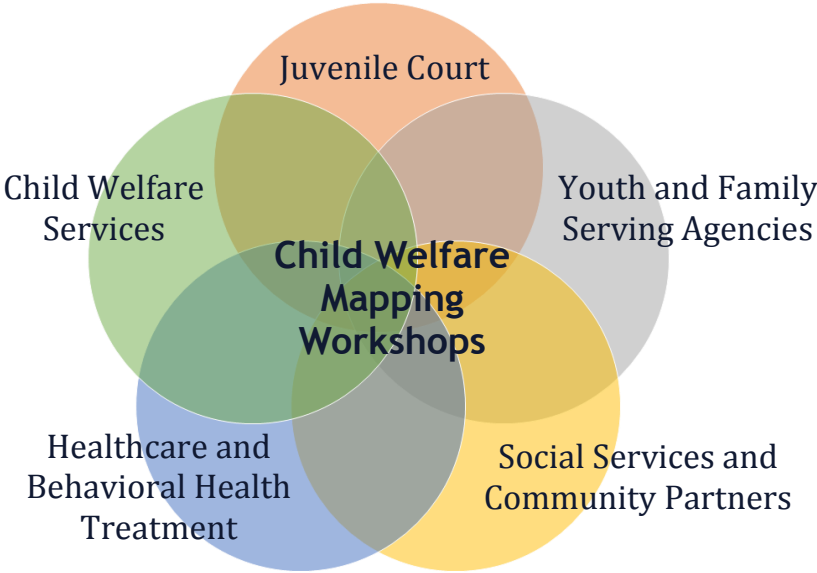


Support safe, nurturing and permanent homes for children

Child welfare mapping workshops in Massachusetts provide communities with a tool to work across systems to strengthen families and support safe, nurturing and permanent homes for children.

Launched by the Massachusetts Juvenile Court Department in collaboration with the National Center for State Courts, child welfare mapping workshops bring together local stakeholders for a series of action-oriented working meetings. Using a tool informed by the *Sequential Intercept Model*\*, stakeholders collectively map the local child welfare landscape, identify resources and gaps in services, and create an action plan to enhance collaboration within and across systems.

Child welfare mapping in Massachusetts builds upon the Juvenile Court Department’s differentiated case flow management **Pathways** initiative. **Pathways** is designed to ensure fair, just and prompt resolution of abuse and neglect cases, with a focus on improving timely permanency for children.



### Points of Prevention and Intervention

Prevention		Child Welfare	Courts	Aftercare
Primary <i>Universal</i>	Secondary <i>Families at-risk</i>			
Community services	Family-centered treatment for behavioral health needs	Referral	Court Diversion	Linkages to community services
Economic supports	Enhanced primary care	Screening	Petition	Reentry prevention
Positive parenting norms and skills	Victim-centered services	Assessment and investigation	Case Plan	Exit planning
Quality early childhood care and education	Treatment to lessen harms of abuse and neglect exposure	Intervention, services, and treatment	Permanency/Disposition	
Youth connections to caring adults	Treatment to prevent problem behavior and future involvement in violence	Referral to court		
	Trauma therapy			
	Domestic violence services			

*\*The Sequential Intercept Model is a framework and tool used to facilitate cross-systems collaborations that reduce the risk of criminal justice system involvement among people with behavioral health needs. Please see the Trial Court’s Community Justice Project [website](#) for more information. The National Center for State Courts is developing the child welfare mapping tool under grant number SJI-18-P-048 from the State Justice Institute. The points of view expressed are those of the author and do not necessarily represent the official position or policies of the State Justice Institute.*